

ARCHITECTURAL APPROVAL CHECKLIST AND APPLICATION

BUILDERS NAME _____ LOT # _____

JOB CONTACT _____ OWNERS NAME _____

MAILING ADDRESS _____ MAILING ADDRESS _____

PHONE NUMBER(S) _____ PHONE NUMBER(S) _____

FAX NUMBER _____ FAX NUMBER _____

E-MAIL ADDRESS _____ E-MAIL ADDRESS _____

PRELIMINARY CONCEPT PLAN

SCHEMATIC SITE PLAN (drawn to scale)

SCALE PROPOSED BUILDINGS

LOT LINES DRIVEWAY LOCATION

SETBACKS PROPOSED CLEARING

50' BUFFER LINE PROPOSED WALLS & FENCES

ELEVATIONS AT ROAD AND BUFFER LINE SERVICE AREAS (trash, hvac, utility routing, septic field & tank - identify sewer & water meter locations)

AC APPROVAL

BUILDING FLOOR PLANS & ELEVATIONS (drawn to scale)

PROPOSED FLOOR PLANS total heated _____

main floor _____ upper floor _____ basement (heated) _____

SETBACKS ELEVATIONS ROOF PITCH(S)

front _____ lakeside _____ sides & garage _____

PRELIMINARY MATERIAL SELECTION

foundation _____ siding _____ roofing _____

AC APPROVAL

CONSTRUCTION PLANS

FINAL SITE PLAN (drawn to scale)

INFORMATION NOTED ABOVE TREES TO REMAIN

FINAL GRADES & FLOOR ELEVATIONS WALKS & DECKS

SILT FENCE & TREE PROTECTION FENCE

PLANTING PLAN (buffer replanting & perimeter yards)

SERVICE AREA SCREENING

DRIVEWAY MATERIALS

STORMWATER DRAINAGE (show all pipes and outlets)

SURVEYOR, ARCHITECTS OR LANDSCAPE ARCHITECTS SEAL

FINAL BUILDING PLANS (include all information noted above)

MATERIAL (manufacturer, product & sample required) COLOR SELECTION

foundation/chimney _____

siding - 1 _____

siding - 2 _____

trim _____

windows _____

shutters _____

roofing _____

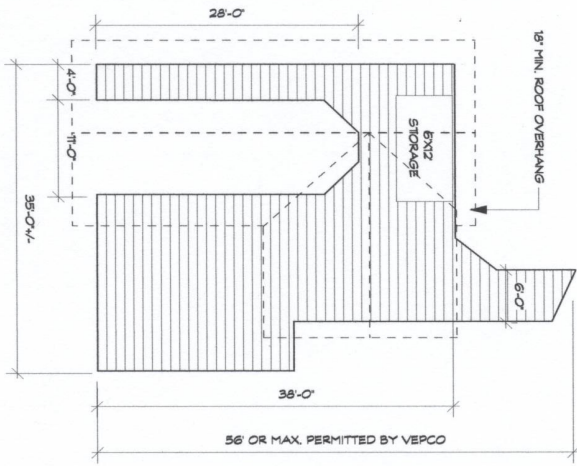
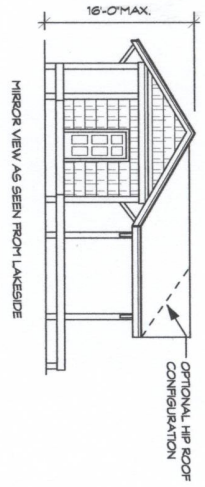
garage doors _____

AC APPROVAL

NOTE: ALL CLEARING LIMITS MUST BE FLAGGED AND APPROVED BY ARCHITECTURAL COMMITTEE PRIOR TO CLEARING. TREE PROTECTION FENCING AND SILT FENCE MUST BE INSTALLED PRIOR TO REMOVAL OF STUMPS OR EARTHWORK.

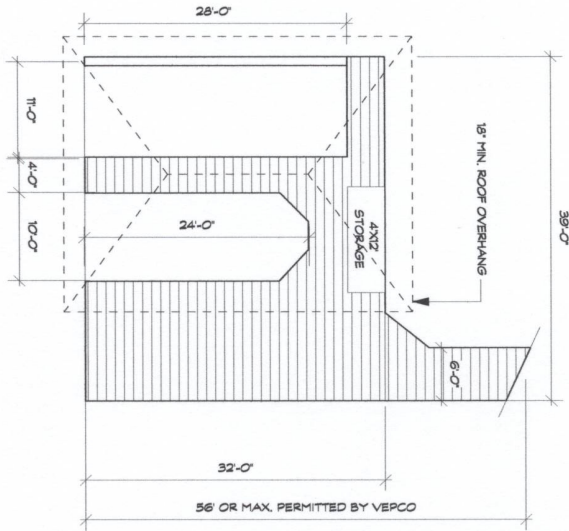
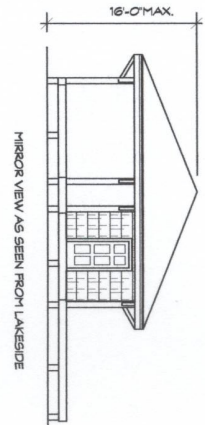
ALL PLAN SUBMITTALS SHALL BE ON 11" X 17" PAPER. MATERIALS SAMPLES ARE REQUIRED FOR PAINT, SHINGLES, SIDING, STONE & MASONRY.

STREET REPAIR DEPOSIT PAID _____



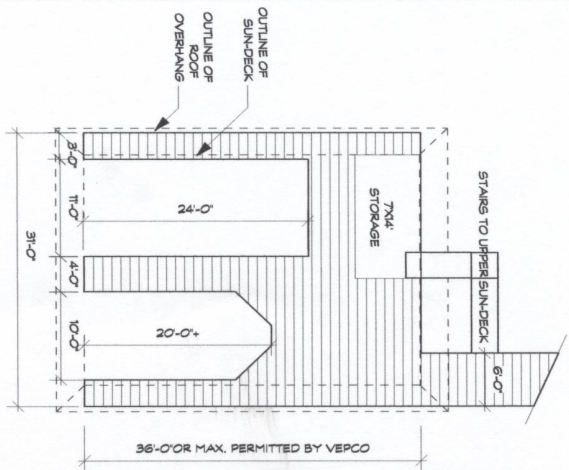
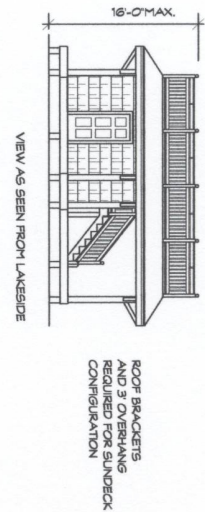
1,250 SF MAX. (inc. access pier)
100 SF MAX. STORAGE (incl. in 1,250 sf)

TYPICAL 1-SLIP PIER LAYOUT



1,250 SF MAX. (inc. access pier)
100 SF MAX. STORAGE (incl. in 1,250 sf)

TYPICAL 2-SLIP PIER LAYOUT
PIER CONFIGURATION MAY INCLUDE OPTIONAL SUN-DECK



1,250 SF MAX. (inc. access pier)
100 SF MAX. STORAGE (incl. in 1,250 sf)

ALTERNATE 2-SLIP PIER LAYOUT

ROOF BRACKETS
AND 3' OVERHANG
REQUIRED FOR SUNDECK
CONFIGURATION

RECOMMENDED PLANT LIST FOR PEETE RIVER FARM

Appendix 'C'

The natural character of Peete River Farm is enhanced by the choice of "native" plant species for landscaping and the avoidance of more "exotic" choices. Native species require less maintenance and demand fewer pesticides for healthy growth. More information can be found at www.plantnative.org under North Carolina. The following list represents native plants which are commonly available through commercial nurseries and are identified as being least susceptible to deer browsing by the NC Wildlife Resources Commission. Since the animal's tastes and habits change this list is not fool proof. The only sure protection for plants susceptible to browsing is deer netting during the winter months. The Architectural Committee makes no guarantees regarding the appeal of these plants to the resident deer population.

Trees	NATIVE PLANTS - NC	Scientific Name	Sun	Moist	Ht.	Comments
(SMALL)	Common Name					
	Serviceberry	<i>Amelanchier arborea</i>	F-P	A-D	15-25'	Yellow/orange/red fall color; white flowers in April
	Devil's Walkingstick	<i>Arcella spinosa</i>	F-P	A-D	10-20'	Thorny; 3-4" clusters of white flowers in sum.; birds like berries
	Paw Paw	<i>Asimina triloba</i>	P-S	A	40'	Unique fruit resembles & tastes like banana
	American Hornbeam	<i>Carpinus caroliniana</i>	P-S	W-A	20-30'	Good street tree; yellow/orange/scarlet fall color
	Chinquapin	<i>Castanea pumila</i>	F-S	A	20-25'	Slender spikes of strongly scented staminate flowers
	Eastern Redbud	<i>Cercis canadensis</i>	F-S	A-D	20-30'	Clusters of rosy/pink flowers (Apr); flowers line branches/trunk
	Fringetree	<i>Chionanthus virginicus</i>	F-P	A	12-20'	Wispy, creamy white, fragrant flowers in May
	Pagoda Dogwood	<i>Cornus alternifolia</i>	P-S	W-D	15-25'	Clusters of white, flowers (late sum.); Black berries, fall foliage
	Flowering Dogwood	<i>Cornus florida</i>	F-S	D-A	25-30'	White, flowers in spring turn into bird-attracting berries
	Washington Hawthorn	<i>Crataegus phaenopyrum</i>	F-P	A	25-30'	White, spring flowers; red fall berries; orange/scarlet fall color
	Persimmon	<i>Diospyros virginiana</i>	F-P	D-A	30-50'	Yellow/orange/mauve color; butterfly larval plant
	Carolina Silverbell	<i>Halesia carolina</i>	F-S	A	30'	Drooping large white bell-shaped flowers in early spring
	Common Witch-hazel	<i>Hamamelis virginiana</i>	F-S	A	15-30'	1" fragrant, creamy to bright yellow flowers in fall
	American Holly	<i>Ilex opaca</i>	F-S	A-D	20-40'	To ensure fruit, one male is needed per 2-3 females
	Red Cedar	<i>Juniperus virginiana</i>	F-P	A-D	40-50'	Offers nesting and cover to birds
	Umbrella Tree	<i>Magnolia tripetala</i>	F-P	A	15-40'	6-8" white, flowers spring w/unpleasant odor; red fruit in fall
	Hop-hornbeam	<i>Ostrya virginiana</i>	P-S	A	30-60'	Scarlet red autumn color
	Sourwood	<i>Oxydendrum arboreum</i>	F-S	A-D	20-30'	Fragrant flowers in spring; yellow/pink/red in fall
	Hoptree	<i>Ptelea trifoliata</i>	F-S	A	15-20'	Small, white fragrant flowers; yellow/green fall color
	American Plum	<i>Prunus americana</i>	F-P	W-D	12-20'	White fragrant flowers in spring; 1" red/yellow fruit in summer
	Pin Cherry	<i>Prunus pensylvanica</i>	F-P	W-D	25-40'	Leaves poisonous to livestock; fruit attracts birds
	Common Sassafras	<i>Sassafras albidum</i>	F-P	D-A	30-60'	Yellow flowers (Apr); clear yellow/orange/pink/scarlet fall color
	Blackhaw Viburnum	<i>Viburnum rufidulum</i>	F-S	D-A	10-15'	Showy clusters of white, flowers that leap out from foliage
(LARGE)						
	Red Maple	<i>Acer rubrum</i>	F	W-D	50-75'	Buds and young twigs are red/green fall color
	Sugar Maple	<i>Acer saccharum</i>	F-P	A	50-75'	Excellent fall color; beautiful large shade tree
	Yellow Buckeye	<i>Aesculus flava</i>	P-S	A	50-75'	Erect clusters of yellow flowers in spring; org. fall color

Yellow Birch	<i>Betula alleghaniensis</i>	F-P	A	60-75'	Does best in cool soil; beautiful bark
Sweet Birch	<i>Betula lenta</i>	F-P	A	40-55'	Golden-yellow fall color
River Birch	<i>Betula nigra</i>	F	A-W	40-70'	Modest yellow fall color; seed attracts birds
Bitternut Hickory	<i>Carya cordiformis</i>	F-P	A	50-70'	Striking yellow buds; pinnately compound leaves
Pignut Hickory	<i>Carya glabra</i>	F-S	D	50-60'	Golden-yellow fall color; rapid growth rate
Yellowwood	<i>Cladrastis kentuckea</i>	F-P	A	30-50'	Clusters of fragrant/white pea-type flowers (spr); yellow fall color
Beech	<i>Fagus grandifolia</i>	F-P	A	85+'	Nuts in fall attract birds/mammals/humans
Tulip Tree	<i>Liriodendron tulipifera</i>	F	A	70-90'	Large tulip-like flowers are yellow/green./org. in May-June
Cucumber Tree	<i>Magnolia acuminata</i>	P-S	A	50-75'	Yellow/green; magnolia-type flowers (spring); pink/red fruit in fall
Black Tupelo	<i>Nyssa sylvatica</i>	F	A-D	30-60'	Scarlet-red fall color
Sycamore	<i>Platanus occidentalis</i>	F-P	A-W	70-90'	leaves drop all summer; white mottled bark
Red Spruce	<i>Picea rubens</i>	F-S	A	60-70'	Evergreen; 2" green/purple cones mature to red/brown
Black Cherry	<i>Prunus serotina</i>	F-P	D	50-80'	Messy tree; small edible berries in sun; attract birds
White Oak	<i>Quercus alba</i>	F-P	D	60-90'	Brown/red/ bright red fall color; grows rapidly
Red Oak	<i>Quercus rubra</i>	F-P	D-A	60-75'	Russset red to bright red fall color; grows rapidly
Post Oak	<i>Quercus stellata</i>	F-P	D	40-50'	Variable fall color; non-showy to golden-brown
American Linden	<i>Tilia americana</i>	F-S	A	60-80'	Clusters of creamy yellow fragrant flowers in early
Canadian Hemlock	<i>Tsuga canadensis</i>	F-S	A	40-60'	When grown in sun this evergreen requires consistent watering
Carolina Hemlock	<i>Tsuga caroliniana</i>	F-S	A	30-70'	Good screen for cool, shady areas
Shrubs					
Common Name	Scientific Name	Sun	Moist	Ht.	Comments
(SMALL)					
New Jersey Tea	<i>Ceanothus americanus</i>	F-P	D	3'	Short spikes of tiny white flowers in June
Sweetfern	<i>Comptonia peregrina</i>	F-P	A-D	2-4'	Lacy serrated foliage which is pleasantly aromatic
Snowhill Hydrangea	<i>Hydrangea arborescens</i>	P-S	A	4-6'	Large clusters of flat, creamy white flowers Jun-Jul
Shrubby St. John's Wort	<i>Hypericum proflificum</i>	F-P	A	1-5'	Showy 1" yellow flowers bloom Jun-Sept
Drooping leucothoe	<i>Leucothoe fontanesiana</i>	P-S	A	3-5'	Lance-shaped leaves on slender stems; few branches
Carolina Rose	<i>Rosa carolina</i>	F-P	W-D	3-4'	Yellow, orange, red fall color; pink flowers May-July
Swamp Rose	<i>Rosa palustris</i>	F-P	A-W	4-6'	Fragrant flowers in summer; red hips in fall
Cranberry	<i>Vaccinium macrocarpon</i>	F-P	A	4-6'	Pink bell-shaped flowers in spring; edible fruits
Lowbush Blueberry	<i>Vaccinium pallidum</i>	F-P	A-D	12-16'	Sets some fruit even in shade; has white/pink flowers
Maple-leaf Viburnum	<i>Viburnum acerifolium</i>	F-P	A-D	6'	Pie-shaped clusters of creamy-white flowers; beautiful fall color
(MEDIUM)					
Red Chokeberry	<i>Aronia arbutifolia</i>	F-P	W-A	6-11'	Red berries load shrub & are eaten by mammals and birds
Black Chokeberry	<i>Aronia melanocarpa</i>	F-P	D-W	3-5'	Dependable showy orange, burgundy & purple fall color
Sweetshrub	<i>Calycanthus floridus</i>	P-S	A	6-10'	Interesting brown blooms Apr-July
Cinnamonbark	<i>Clethra acuminata</i>	F-P	A	8-15'	Twisted racines of white lily-of-the-valley like fragrant flowers
Silky Dogwood	<i>Cornus amomum</i>	F-S	A-W	6-10'	Creamy white flowers May-Jun; no fall color
Hazelnut	<i>Corylus americana</i>	F-S	A	12-15'	Edible nuts; suckering

Bush-honeysuckle	<i>Diervilla sessilifolia</i>	F-S	A	4-6'	Small yellow flowers on tips of new growth all summer
Hearts-a-bustln	<i>Euonymus americanus</i>	P-S	A	4-6'	Purplish flowers in May; Red seed pods in Sept; attracts birds
Large Fothergilla	<i>Fothergilla major</i>	F-P	A	6-10'	Showy, fragrant flowers in spring; spectacular fall leaves
Dense Hypericum	<i>Hypericum densiflorum</i>	F-P	W-D	4-6'	Golden yellow 1' flowers in late spring
Common Winterberry	<i>Ilex verticillata</i>	F-S	A-W	6-15'	Red berries on female plants persist into winter & attract birds
Virginia sweetspire	<i>Itea virginica</i>	F-S	W	3-6'	Spectacular long lasting yellow, orange, crimson fall color
Mountain Laurel	<i>Kalmia latifolia</i>	F-P	A	8-10'	Pink, red, or white flowers in late spring
Spicebush	<i>Lindera benzoin</i>	P-S	A	6-12'	Yellow spicily fragrant flowers in late winter; red fruit in fall
Sweet Azalea	<i>Rhododend. arborescens</i>	F-S	A	3-6'	Fragrant white to pink flowers, red stamen in early summer
Flame Azalea	<i>Rhodod. calendulaceum</i>	P-S	A	4-8'	Yellow, orange, scarlet flowers in late spring
Carolina Rhododendron	<i>Rhodod. carolinianum</i>	P-S	A	3-5'	Light to dark pink flowers mid-May; evergreen
Mountain Rosebay	<i>Rhodod. catawbiense</i>	F-S	A	6-10'	Variable flower color - often pink flowers before leaves emerge
Pinkster Azalea	<i>Rhodod. periclymenoides</i>	P-S	A	6-10'	Variable flower color - often pink flowers before leaves emerge
Pinkshell Azalea	<i>Rhododendron vaseyi</i>	F-P	A-W	5-10'	Pink/white flowers with orange freckles emerge before leaves
Elderberry	<i>Sambucus canadensis</i>	F-S	A-W	5-12'	Showy white flowers in July, edible fruit in Sept
Coral Berry	<i>Symphoricar. orbiculatus</i>	F-S	A	2-5'	Bell shaped flowers become clusters of large pink berries
Hobblebush	<i>Viburnum alnifolium</i>	P-S	A	6-10'	White flowers; red to black berries; yellow/orange/red fall color
Highbush Blueberry	<i>Vaccinium corymbosum</i>	F-P	D-W	6-12'	Excellent fall color; fruit readily eaten by humans & wildlife
Deerberry	<i>Vaccinium stamineum</i>	F-P	A	10-15'	Twisted trunks; bell-shaped flowers; sweet, spicy tasting fruit
Withered Viburnum (LARGE)	<i>Viburnum cassinoides</i>	F-S	A-W	5-6'	White flowers; green, pink, red, blue, & black berries
Tag Alder	<i>Ainus serrulata</i>	F-P	W	40'	Can fix nitrogen
Mountain Winterberry	<i>Ilex montana</i>	F-P	A	15-40'	Red berries on female plants
Mock Orange	<i>Philadelphus inodorus</i>	F-P	W	10-12'	White fragrant blooms smell like orange blossoms
Rosebay Rhododendron	<i>Rhododend. maximum</i>	P-S	A-W	15-40'	Huge clusters of white to deep pink flowers with yellow spots
Smooth Sumac	<i>Rhus glabra</i>	F-P	D-A	9-15'	Velvety red fruit on female plants that persist into winter
Silky Willow	<i>Salix sericea</i>	F-S	W-A	12'	Provides good wildlife habitat
Arrowwood	<i>Viburnum dentatum</i>	F-P	W-A	6-12'	Creamy-white blooms in spring

Herbaceous Perennials

Common Name	Scientific Name	Sun	Moist	Ht.	Comments
Doll's eyes	<i>Actea pachypoda</i>	P-S	A	1-2'	Small white flowers Apr-May; poisonous white berries Aug-Sep
Blue Star	<i>Amson. tuberosa/montana</i>	F-P	A	2-3'	Blue showy flowers in May
Thimbleweed	<i>Anemone virginiana</i>	S	A	1-3'	Lovely large white flowers followed by fluffy seed heads
Wild Columbine	<i>Aquilegia canadensis</i>	P-S	A-D	1-2'	Unique red & yellow flowers attract hummingbirds
Pussy's Toes	<i>Artem. plantaginifolia</i>	F	A	1/2-1'	Forms a low mat of little rosettes of white-wooly leaves
Green Dragon	<i>Arisaema dracunculifolium</i>	P-S	A-D	28"	Similar to Jack-in-the-pulpit; goes dormant mid-summer
Jack-in-the-Pulpit	<i>Arisaema triphyllum</i>	P-S	A	12"	Spathe appears Mar-May; red berries late summer, fall
Goat's Beard	<i>Aranucus dioicus</i>	F-P	A	4-7'	Feathery plumes of cream-colored flowers rise above foliage

Wild Ginger	<i>Asarum canadense</i>	P-S	A	6'	Evergreen groundcover with heart-shaped glossy leaves
Butterfly Weed	<i>Aechmea tuberosa</i>	F	D	1-2'	Clusters of brilliant orange flowers Jun-Aug
White Wood Aster	<i>Aster divaricatus</i>	P-S	A-D	2-4'	Showiest of shade-loving asters; white flowers in late spring
Late Purple Aster	<i>Aster patens</i>	F-P	A-D	1-3'	1 1/2" bright violet-blue flowers with yellow centers
False Goats Beard	<i>Astilbe bierrata</i>	P	A	24-39"	Fern-like foliage and plume flowers
Wild Indigo	<i>Baptisia thurcota</i>	F	A	2-3'	Small yellow flowers July-Aug
Blue Cohosh	<i>Cauloph. thalictroides</i>	P-S	A-W	1-3'	Green flowers Apr-May; blue poisonous berries
Pink turtlehead	<i>Chelone lyonii</i>	F-P	A-W	24-30"	Showy pink flowers July-Sept
Green-and-Gold	<i>Chrysogon. virginianum</i>	P-S	A	8"	Yellow flowers contrast green foliage in spring & fall
Black Cohosh	<i>Cimicifuga racemosa</i>	P-S	A	1-3'	Slender candle-like clusters of white showers in summer & fall
Mouse-eared Coreopsis	<i>Coreopsis auriculata</i>	F	A	18"	Rich yellow flower head springs to frost if dead-headed
Coreopsis	<i>Coreopsis pubescens</i>	F	A	3-4'	Bright golden yellow flowers all summer
Bleeding Heart	<i>Dicentra eximia</i>	F-P	A	12-18"	Attractive foliage & interesting pink & white flowers
Shooting Star	<i>Dodecatheon meadia</i>	F-P	A	1-2'	Delicate white to pink petals, red & yellow center
Trout Lily	<i>Erythron. americanum</i>	P-S	A	3-6'	Large low-petaled yellow flowers
Joe-Pye Weed	<i>Eupatorium fistulosum</i>	F-P	A	5-8'	Purplish-pink flowers explode in Aug/Sept attracting butterflies
Wild Strawberry	<i>Fragaria virginiana</i>	F-P	A-D	6"	Forms groundcover; tasty fruit in early summer
Wittengreen	<i>Gaultheria procumbens</i>	P-S	A	4-8"	Pink flowers in summer followed by edible fruit that persists
Wild Geranium	<i>Geranium maculatum</i>	F-S	A	1-2'	1" lavender-purple flowers in spring & summer
Sharp-lobed Hepatica	<i>Hepatica acutiloba</i>	S	A-S	4-9"	White, pink, blue, or purple solitary flowers in spring
Alumroot	<i>Heuchera americana</i>	S	D	1-3'	Greenish-purple bell-shaped flowers bloom on leafless stalks
Little Brown Jugs	<i>Hexastylis arifolia</i>	P-S	A	6"	Spotty groundcover, heart-shaped leaves, jug-shaped flowers
Jewelweed	<i>Impatiens capensis</i>	F-P	A	3'	Beautiful orange flowers attract butterflies & hummingbirds
Dwarf Crested Iris	<i>Iris cristata</i>	P-S	A-D	4-8"	Pale lavender-blue, crested flowers Apr-May
Blazing Star	<i>Liatris spicata</i>	F	A	3'	Tall purple spikes bloom after 2-3 years
Turks-cap Lily	<i>Lilium superbum</i>	F-P	A	4-6'	Gorgeous orange flowers; morning sun & afternoon shade
Cardinal Flower	<i>Lobelia cardinalis</i>	F-P	W	3-5'	Terminal clusters of bright red flowers each 1 1/2" long in fall
Lobelia	<i>Lobelia puberula</i>	F-S	A-P	2-4'	Spikes of flowers range from pale blue to violet
Great Lobelia	<i>Lobelia siphilitica</i>	P-S	W	1-3'	Elongated clusters of pale to dark blue flowers in late summer
Fringed Loostrike	<i>Lysimachia ciliata</i>	F-P	A-W	2-3'	Yellow flowers grow upside-down
Partridge Berry	<i>Mitchella repens</i>	P-S	A	3"	Elegant pink flowers, red edible fruit, dense/creeping ground cover
Bishop's Cap	<i>Mitella diphylla</i>	P-S	A-D	1-2'	Produces distinctive clusters of tiny white flowers
Bee Balm	<i>Monarda didyma</i>	F-P	A	3-4'	Edible leaves; red flowers attract bees/hummingbirds
Allegheny Spurge	<i>Pachysand. procumbens</i>	S	A	9-12"	Mottled purple leaves; flowers are white with pink tinge
Phacelia	<i>Phacelia beppinotifida</i>	P-S	A	12-18"	Re-seeds readily; contact can cause allergic reaction
Chalice Phlox	<i>Phlox amoena</i>	F-P	A	2-3'	Clusters of fragrant rose & white flowers, attracts hummingbirds
Carolina Phlox	<i>Phlox carolina</i>	F-P	A	3-4'	Thick leaves & showy flower clusters
Wild Blue Phlox	<i>Phlox divaricata</i>	P-S	A	12-18"	Fragrant lavender-blue flowers Apr-May
Garden Phlox	<i>Phlox paniculata</i>	F-P	A	2-4'	Clusters of magenta, pink lavender, or white flowers Jul-Sep
Creeping Phlox	<i>Phlox stolonifera</i>	P-S	A	6"	White, pink, purple to violet trumpet-shaped flowers in spring

Common Name	Scientific Name	Sun	Moist	Ht.	Comments
Ferns					
Golden Aster	<i>Phytis granitifolia</i>	F	A-D	2'	Leaves look like silvery grass blades; Numerous yellow flowers
Solomon's Seal	<i>Polygonatum biflorum</i>	P-S	A	2-3'	1/2" bell-shaped greenish-white flowers hang from leaf axils
Black-eyed Susan	<i>Rudbeckia hirta</i>	F	A-D	2-3'	2-4" flower heads with 10-20 bright yellow petals summer/fall
Bloodroot	<i>Sanguinaria canadensis</i>	S	A	6-10"	2" white flowers with yellow centers; roots have red sap
Ox-eye Daisy	<i>Shorthia galacifolia</i>	F-P	A	8"	Waxy leaves & dainty, frilly, parasol-like white flowers in May
Fire Pink	<i>Silene virginica</i>	F-P	A	10-20"	Deep red-pink flowers attract hummingbirds
Blue-eyed Grass	<i>Sisyrinchium mucronat.</i>	F-P	A-D	1'	Rich blue/purple flowers with yellow centers May-Jul
Winkle-leaf Goldenrod	<i>Solidago rugosa</i>	F	A-D	2-5'	Tiny flowers look like strings of yellow beads Aug-Oct
Bush Pea	<i>Thermopsis villosa</i>	S	A	3-5'	1" yellow flowers crowd long narrow erect clusters spring/sum
Foamflower	<i>Tiarella cordifolia</i>	P-S	A	6-12"	Evergreen groundcover; feathery white flowers Apr-Jun
New York Ironweed	<i>Vernonia noveboracensis</i>	F	A-W	4-7'	Intense reddish-purple thistle-like heads
Yellow-root	<i>Xanthorhiz. simplicissima</i>	F-S	A	2'	Bright green celery-like foliage; racemes of purple flowers
Ferns					
Common Name	Scientific Name	Sun	Moist	Ht.	Comments
Maidenhair Fern	<i>Adiantum pedatum</i>	P-S	A	18-36"	Tiny fan-shaped deep blue-green fronds held on black stems
Lady Fern	<i>Athyrium filix-femina</i>	S	A-W	18-24"	Delicate & lacy arching fronds have dark red stems at maturity
Hay-scented Fern	<i>Dennstaedtia punctiloba</i>	S-F	A	36"	Fronds smell like hay when crushed
Sensitive Fern	<i>Onoclea sensibilis</i>	F-P	W	12-24"	Deeply pinnate leaves; poisonous to livestock
Cinnamon Fern	<i>Osmunda cinnamomea</i>	P-S	A-W	24-45"	Clusters of arching fronds; cinnamon colored fertile fronds
Royal Fern	<i>Osmunda regalis</i>	P	A-W	2-6'	Bipinnate blade; pinnae resemble locust tree leaves
Christmas Fern	<i>Polystich. acrostichoides</i>	P-S	A	12-36"	Stiff deep green fronds are once-pinnate

MAILBOX DETAIL TO BE ADDED